

NJP-200C Automatic Capsule Filling Machine



Introduction

This machine is an upgraded version of semi-automatic capsule filling machine. It is mainly used for filling powdery and granular materials to empty capsules (000#, 00#, 0#, 1#, 2#, 3#, 4#, 5#). It can automatically finish the production process including sowing, capsule separating, filling, locking, unqualified capsule rejected and finished products output. It has the advantages of accurate loading, stable operation and no dust. It meets the GMP requirements, it is an ideal equipment for filling Chinese, Western medicines and health care product .

Technician Parameters

Production capacity	12000 pcs/h
Net weight of machine	600Kg
Overall size of machine	805×705×1760(mm)
Power	380/220V 50Hz
Total power	3KW
No.of segment bores	2
Vacuum	20m3/h-0.04-0.08Mpa
Dust collector	17.6Kpa 180m3/h
Noise	<75DB(A)
Making rate	Empty capsule 99.9% Full capsule 99.8%
Applicable capsule	000#, 00,0,1,2,3,4,5#; Safety capsule A-E
Filling error	Western medicine:±3% Chinese medicine:±4%
Applicable product	Power、 granule、 pellet、 tablet

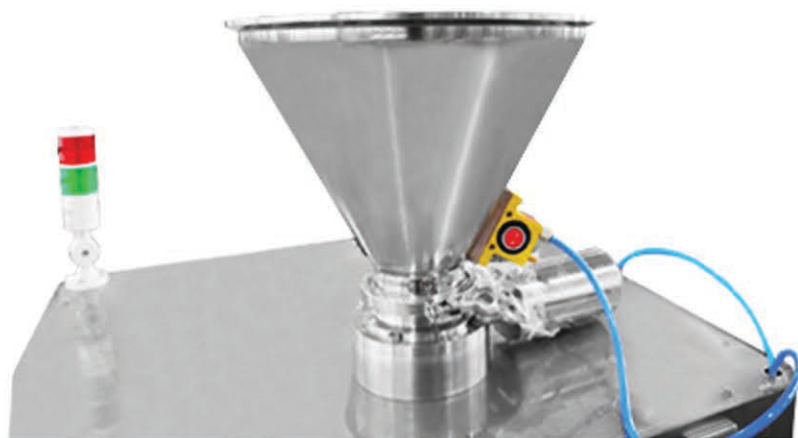
Configuration List

Item	Specification	Qty.	Manufacturer
Touch screen	6AV6/648-0BC11-3AX0	1	Germany Siemens
PLC	6ES7/288-1ST20-0AA0	1	Germany Siemens
AC Contactor	3TB42	4	Germany Siemens
Frequency converter	ATV320U07N4C	1	Schneider
Button	ZB2-BA3C	3	Schneider
Main Motor	MTD-37-Y0.75	1	Omiter
Cam	RU-63DS-6 RU-63DS-8	2	Shandong

Vacuum pump (dry)	RX25-V-0.3	1	Taiwan Ruixu
Dust collector	RQJ	1	Self-made
Linear bearing	LM8UU	64	Korea SAMICK
Linear bearing	LM10UU	8	Korea SAMICK
Linear bearing	LM16UU	8	Korea SAMICK
Linear bearing	LM25UU	4	Korea SAMICK
Roller bearing	CF6B	8	Japan IKO
Roller bearing	CF12B	5	Japan IKO
Roller bearing	CF16B	1	Japan IKO
Deep groove ball bearing	6008	8	Japan NSK

Main Features

- 1、The **Hopper is equipped with the vibrating motor**, which is suitable for various kinds of material.



2、 Safety first, all the working stations take full account of the personal safety, such as the door control and emergency stop switch.

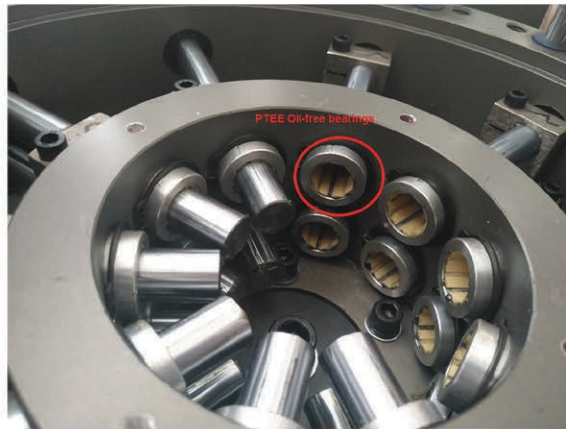
3、 The divider adapt **Germany Zeiss optical dividing head**. With high precision, the error is less than 3%.

4、 The turntable have got national patent:

4. 1 **Transevrse biaxial movement**, the upper mold do up and down movement, the lower mold do left and right movement, ensure accurate separation, no collision.



4. 2 Adapt **PTEE Oil-free bearings**, no need for refueling lifetime.



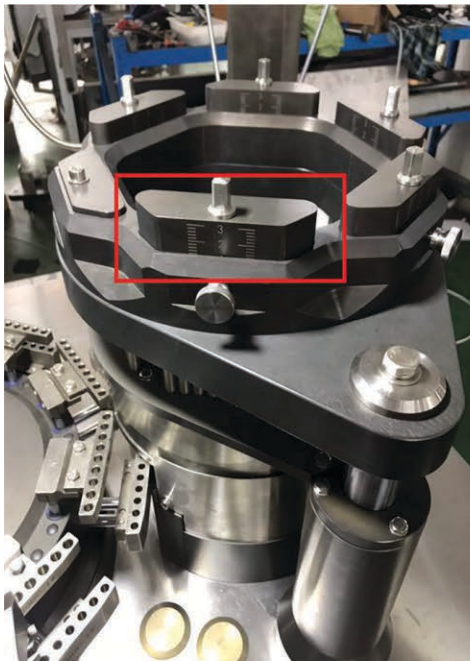
4. 3 **Modular structure**, it is easy to disassemble, assemble and clean the mold.



4. 4 Adapt **double sealing structure**, first seal adapt **NBR rubber** to prevent the loss of lubricating oil, the second seal adapt **imported SIL silicone sealing ring**, effectively prevent powder from entering the inner of turntable, good sealing performance and no dust overflow pollution.

5、 The filling mechanism has obtained the new national patent, adapt **three-dimensional adjustment** to ensure the high accuracy of measuring disc.

6、 The filling rod holder of the capsule filling machine adopts a pull-out slot design. It is easy and convenient to replace various types of filling rods, saving 60% of time.

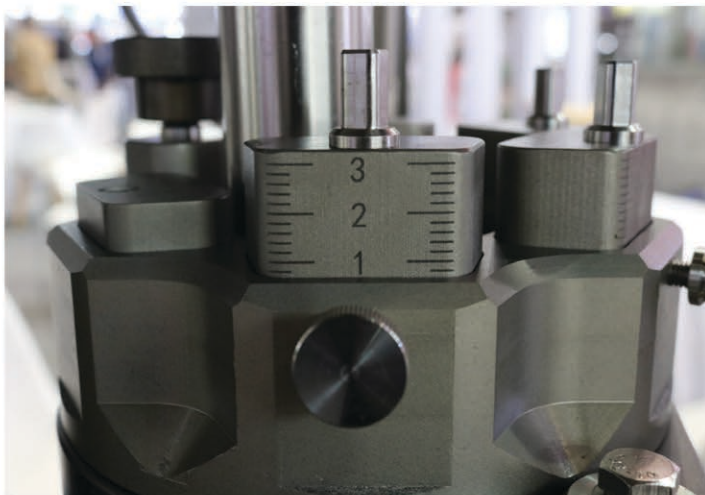


(New type)



(Old type)

7. Nut-type adjustment and measurement device, convenient, fast and accurate.



(New type)



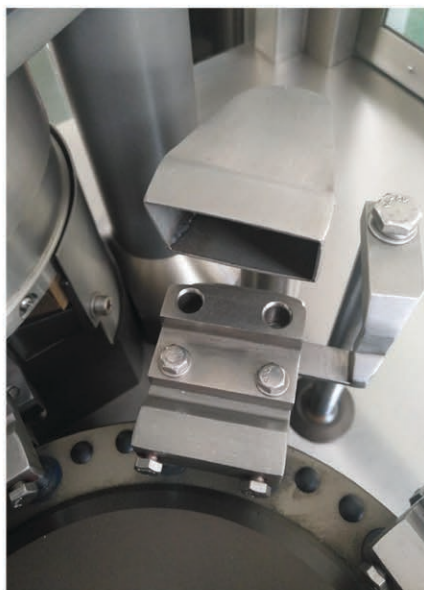
(Old type)

8、 The **capsule sowing adapt new type of track structure**, which is stable in structure, dose not need refueling, feed the capsule accuratly, so it is more suitable for long-term continuous proudction.



9、 The filling rod, upper and lower die hole and metering disc are **polished electrodeless**, which enhance the fluidity of materials, solves the problems of material stickiness with the mould. (We also can Teflon coating them if customer require.)

10、 Automatic **rejection device**, improve the charging efficiency.



- 11、 We will equip with the **powder recovery bin**, recovery utilization rate is 100%, reduce waste and improve economic efficiency.

