



CM2000SERIES

Biological Microscope
Education, Clinic, Laboratory





CM2000 SERIES **Biological Microscope** Education, Clinic, Laboratory

CM2000 Series Biological Microscope becomes a new landmark in our company. Ergonomic design make users feel comfortable even after long-time operation. Equipped with High Contrast Chromatic-free Infinity Plan Objectives, our CM2000 can present users sharp & clear image. Newly-designed mechanical stage can make operators observe 2 specimen at the same time.

CM2000 Characteristics

- Using infinite optical system
- New-designed High contrast full plan objectives, Indicate excellent images
- Configured with Wide Field eyepiece. Each eyepiece allows diopter adjustment to suit different users .
- The overall design of main body is Ergonomic design, It makes user more comfortable
- New large stage with graphite coating on surface
- Standard Kohler illumination, Using LED lights, has long using life.
- Optional parts: Dark Field, Phase contrast, fluorescence, and polarization can be fitted





High point view&Wide field Eyepieces



New WF10X/20mm WF10X/22mm Series High point view&Wide field Eyepieces, Each eyepiece allows diopter adjustment to suit different users. diopter adjustment range D-8 to +5. And easy to find objectives by wide field vision. High Point View, can effectively prevent the observation of eyes met the eyepiece, Also suit for people wear glasses

Rotable Binocular Viewing Head



360 Degree Rotable binocular head. Interpupillary distance adjustment:48mm-75mm.

Working stage&Nosepieces

New-Designed large graphite coating double layer mechanical working stage, Size: 216mmx150mm, adjust by right side. Can make fast contrast analysis by watching two slides at same time, Moving range: 76 X 55mm.

Backward Quadruple/Quintuple Nosepiece



Focusing System&Condensor

Focusing System using Precision metal cog-wheel gearing. Coarse Adjustment range 0.002mm



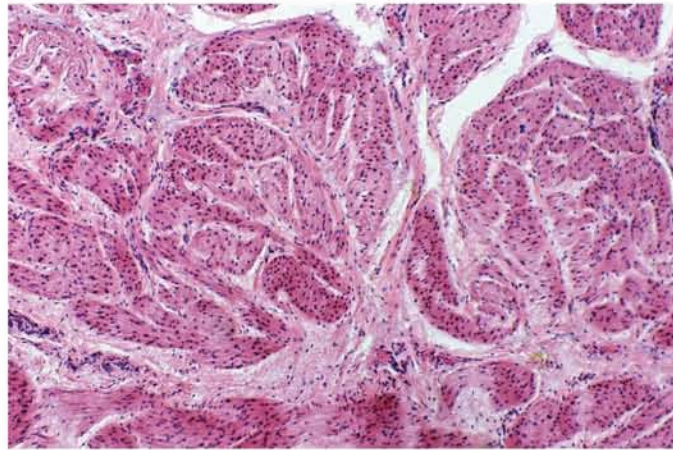
Kohler Illumination Condensor

N.A1.25Kohler Illumination Condensor with diaphragm. Moving by Precision metal cog-wheel gearing

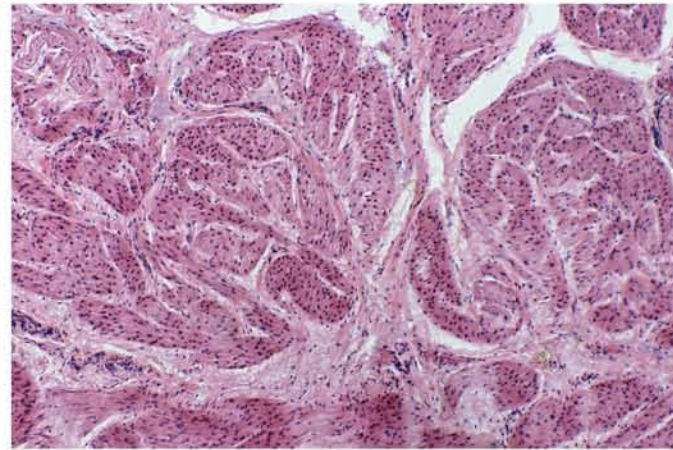


Microscope Back Side





40X objective (new)



40X objective (old)

Bright Field View

CM2000 Excellent optical system, Configured High Contrast Full Plan Achromatic Objectives, and Standard Kohler illumination can provide perfect images, from low to high magnifications.



Dark Field View

Insert the dark field plate into condenser, move the Diaphragm to the optical path, then simple dark field view presented



Simple Phase Contrast

Insert the phase contrast plate into condenser, move the suitable plate to the optical path, then simple phase contrast view presented



Trinocular Viewing Head

CM2000 can be connected to the camera devices, through Trinocular Viewing Head. The images can be output to PC, to Images analysis, processing, storage and transmission

New WF Series Eyepieces

Series High point view & Wide field Eyepieces, Each eyepiece allows diopter adjustment to suit different users. diopter adjustment range D-8 to +5. And easy to find objectives by wide field vision.



WF10X/22mm

WF15X/16mm



New Full Plan Achromatic Objectives

New-Designed High Contrast Full Plan Achromatic Objectives, improve Resolution and definition of images

CM2000 Series Biological Microscope Specifications

Optical System	Infinite Optical System
Viewing Head	Seidentopf Binocular Viewing Head, Inclined at 30° Interpupillary 48mm–75mm
Eyepiece	Wide Field Eyepiece WF10X/F.N.22mm; Wide Field Eyepiece WF16X/F.N.15mm
Nosepiece	Backward Quadruple Nosepiece; Backward Quintuple Nosepiece
Objective	Infinite High Contrast Plan Achromatic Objectives 4X 10X 40X 100X
Condenser	N.A1.25 Kohler Illumination Condenser with diaphragm
Focusing System	Coaxial Coarse and Fine Adjustment, Fine Division 0.001mm, Coarse Stroke 37.7mm/Rotation, Fine Stroke 0.1mm/Rotation, Moving range 24mm
Stage	Double Layer Mechanical Stage 216x150mm, Graphite Surface, Moving Range 75mmx55mm
Kohler Illumination	External Illumination, 3W/LED
Optional Accessory	C Mount 0.5X; Seidentopf Trinocular Viewing Head
	Dark Field Attachment
	Phase Contrast Attachment

Environment

Temperature for use	+10°C...+40°C
Storage temperature	-20°C...+52°C; +50°F...+104°F
Manipulation shock	25mm on 50mm hard wood
Transport shock (unpacked)	100g/6ms
Transport shock (packed)	800mm free fall
Transport vibrations (unpacked)	5–200Hz/1.5g
Atmospheric pressure "in use" and for storage	500–1060mBar
Humidity "in use" and for storage	20–90%
Installation Category II (Overvoltage Category)	
Pollution degree 2	

Illumination

High-power 3W LED illumination with continuous brightness adjustable can make observation much more convenient.

